

Algebra II

7-6

Quadratic Functions

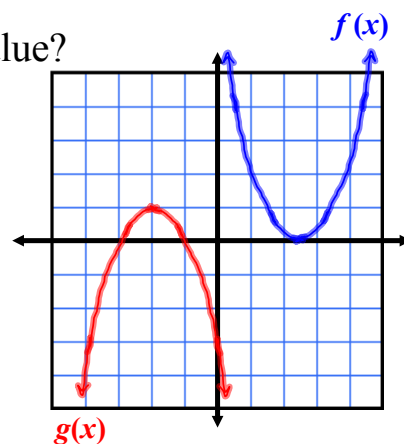
General Form of a Quadratic Function -

Standard Form of a Quadratic Function -

Which of the two quadratic functions has a maximum value?

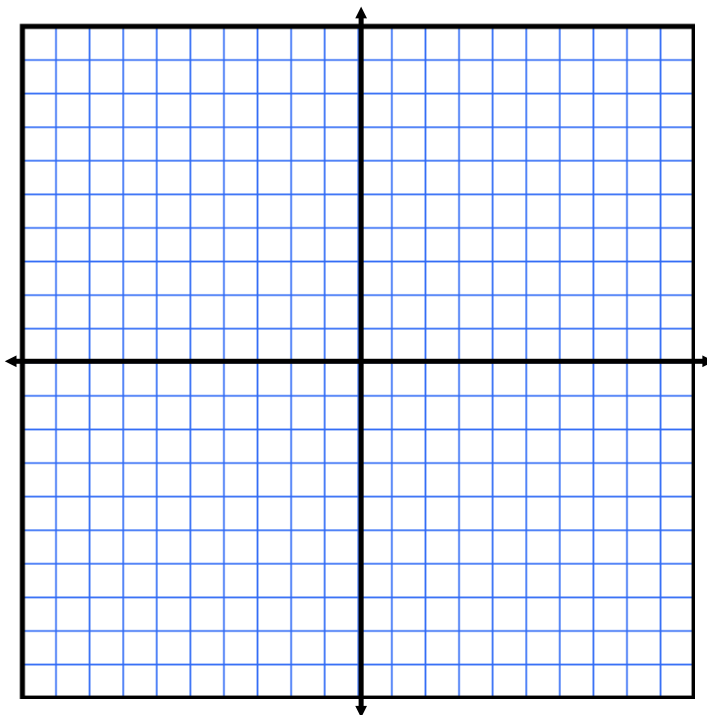
Which has a minimum?

Where does the max or min always occur?



Graph each function. (pg 336)

7) $h(x) = x^2 + 2x - 3$



Find the maximum value or the minimum value of each function. Then give the coordinates of the vertex of the graph.

19) $g(x) = 2x^2 + 8x$

For each function, find:

(a) the vertex of its graph, (b) its domain, (c) its range, (d) its zeros.

25) $f(x) = x^2 - 4x - 3$

Assignment:
Pg. 336
2-36 even (skip 10)
8 Graphs